

Safety

Remember, flying safely is your responsibility.

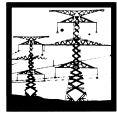
DO NOT FLY NEAR:



People



Airports



Power lines



Cars



Storms

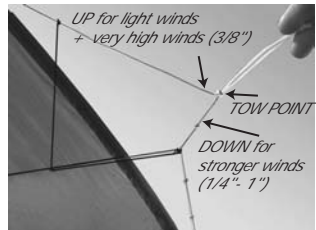
Flight Training

For complete instruction on everything from your first flight to the most radical aerobatics, check out the FLIGHT TRAINING section of the Prism CDROM or the Prism website at www.prismkites.com.

Tuning

Your Prophecy comes factory-tuned to fly optimally in 8-10 mph winds. Once you've gotten used to the feel of the kite, you may want to learn more about tuning your bridle and standoff positions to optimize the kite for lighter and stronger winds. Two primary adjustments are shown below. Complete information on sport kite tuning is available on the Prism CDROM and also on the prism website at www.prismkites.com.

Wind speed

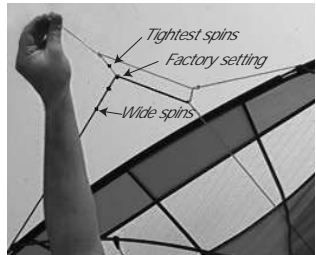


From the factory black mark, move the tow points towards the nose (up) for easier flight in light winds.

Move them away from the nose (down) for better stalls and more pull in stronger winds.

In very strong winds, reduce pull and frame stress by moving the tow points upwards again.

Turn rate



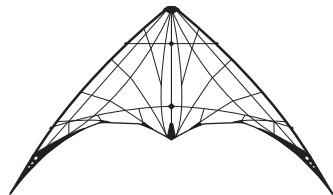
You can change how tightly the kite spins by moving the black bridle legs to different knot positions on the Active Bridle as shown.

Making the kite spin tighter also increases pull slightly.

Settings for wide spins reduce pull and give more precise tracking for team and pairs flying.

Specifications

Wingspan: 96"
Wind Range: 2-20 mph
Frame: SkyShark 3,5,7 PT, PT300,
Weight: 12.9 oz.
Rec'd lines: 100' x 150#



© 2000 Prism Designs Inc. All rights reserved

Prophecy

The Prophecy is our ultimate, no compromises, no holds barred solution for long line flying. If you enjoy flying a big wind window with a full-sized kite, the Proph will let you take your skills as far as you want to go. Its consistent and controllable speed, incredible precision, and rail-straight tracking make it ideal for serious pairs or team flying as well.

We designed the Prophecy as our local flying scene grew and more and more people started flying informally in teams and pairs. People wanted a kite that would do all the hottest tricks but be big enough and stable enough for very precise formation flying. The Proph does all the tricks, but in a wonderfully slow and graceful way that lets you keep flying the kite all the way through each maneuver.

Please read this field card carefully to be sure you assemble and adjust your new Prophecy correctly before flying. For loads of information on all aspects of sport kiting, from kite tuning to the latest tricks, check out the new Prism CDROM *Take Flight*, or stop by our website at www.prismkites.com.

Our Word

At Prism we guarantee everything we make. That means that if you're not happy, we're not happy. If you have a problem with your kite and your retailer is unable to help, please contact us by phone, fax, or e-mail and we'll do everything we can to make things right.

Smooth winds!

Prism Designs Inc.
2222 N. Pacific
Seattle, WA 98103
(206) 547-1100
(206) 547-1200 fax
email: prism@prismkites.com
www.prismkites.com

Inside:

Assembly

Safety

Flight Training

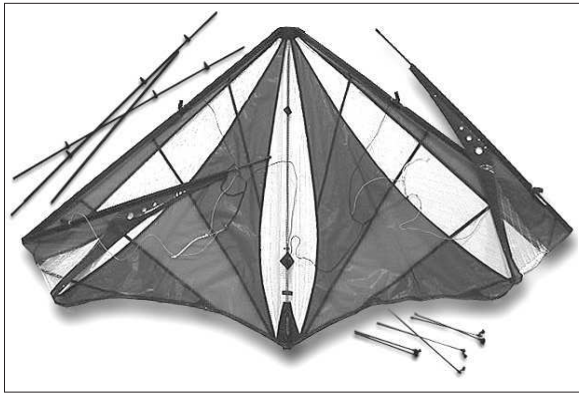
Tuning

Specifications

FIELD CARD

prism

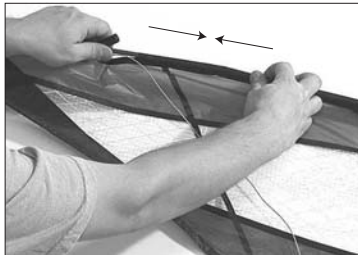
ASSEMBLY



1

Unroll your sail and lay it out as shown. In addition to the sail, you should have:

- Two long lower spreaders, one male and one female
- One short upper spreader
- Two short standoffs
- Two medium standoffs
- Two long standoffs



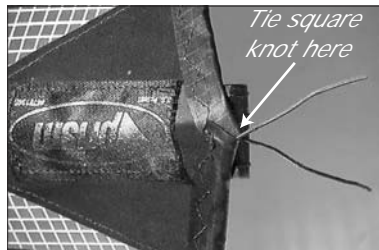
2

Connect the leading edge rods for each wing at the ferrules.



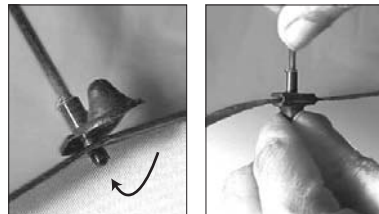
3

Using your upper spreader as a tool, tension the elastic at each wingtip. Check that the sail is smooth and wrinkle-free along the leading edge. The tighter your leading edge, the better the kite will fly.



4

Pull about 1/2" of tension into the red leechlines at the end of the spine and secure them with a square knot. Re-tension as necessary if your kite buzzes at all during flight.

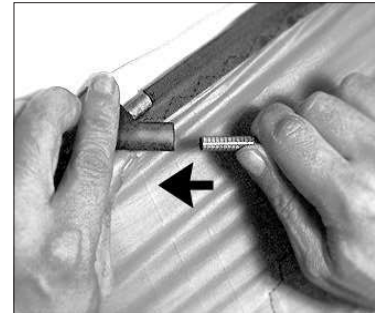


5

Clip the standoff rods into the holes in the back edge of the sail (see next step)

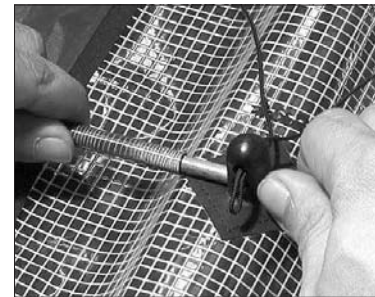
Standoff positions:

SHORTEST STANDOFFS: Outermost holes
LONGEST STANDOFFS: Middle holes
MEDIUM STANDOFFS: Innermost hole



6

Insert the upper and lower spreaders all the way into the leading edge fittings. Check that the bridles are clear of the fittings, and hold the spreader rods close to the end as shown so you don't slip and puncture the sail.



7

Insert the ends of the lower spreaders into the center "T" fitting.

Tension the sail by inserting the standoffs into the spreader fittings. Hang the kite from the bridles to check that they aren't tangled.

