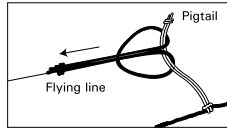


9

Tension the sail by inserting the standoffs into the spreader fittings. Hang the kite from the bridles to check that they aren't tangled.

Find some wind, attach your lines using a Lark's head knot and have fun!



## SAFETY

Remember, flying safely is YOUR responsibility!

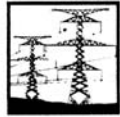
DO NOT FLY NEAR:



People



Airports



Power lines



Cars



Storms

## Tuning (more detailed tuning info available at [www.prismkites.com](http://www.prismkites.com))

Your Illusion 2000 is set at the factory to fly in 8 mph winds. In other conditions, you can adjust the bridle and inner standoffs to optimize performance:

### Bridle:

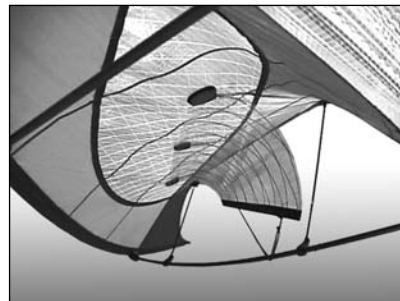
Move the yellow tow points above the black mark (towards the red mark) for light winds. Move them below the black mark in stronger winds. Make your adjustments no more than 1/4" at a time.

### Inner standoffs:

Move your standoffs closer to the spine for more lift in light winds. Move them outwards towards the wingtips in stronger winds. The middle position is best for 8-12 mph.

## High-wind Spoilerz™

Your Illusion 2000 is equipped with six Velcro attachment points for our new high-wind Spoilerz (sold separately). Spoilerz let you fly easily in high winds by reducing speed and pull. But unlike vented panels or mesh wind brakes, they do not affect the balance of the kite for doing tricks. Like flaps on an airplane, Spoilerz let you change your wing shape to add drag and slow the kite down. They are completely adjustable for winds between 12 and 28 mph.



Order from your retailer or direct from [www.prismkites.com](http://www.prismkites.com). Suggested retail: \$24.95

## Illusion 2000

Congratulations! Your new Illusion 2000 is the most capable all-around flying machine we've ever built. If you've been lucky enough to get your hands on one, we know you're in for a treat.

The completely redesigned Illusion 2000 follows the performance tradition of our winningest kite ever, the Illusion. In addition to a completely new sail shape and graphics, the i2k features:

**Higher aspect geometry:** Less prone to tipwraps; easier to trick for less experienced pilots.

**Reverse Tri-Axis bridle:** Gives more precision and better control in radical attitudes; easier slack-line tricks, straighter lines, crisper corners.

**SkyShark frame:** Tougher and more forgiving for fewer broken spars and a smoother feel.

**Spoilerz™ wind brakes:** slow the kite down and reduce pull without affecting trick performance; completely adjustable to let you fly with good control from 12-28 mph (sold separately)

**No-snag outer standoff clips:** will save you many walks to untangle your kite.

## Our Word

*At Prism we guarantee everything we make. That means that if you're not happy, we're not happy. If you have a problem with your kite and your retailer is unable to help, contact us by phone, fax, or e-mail and we'll do our best to make things right. PLEASE NOTE: Due to the nature of our sport we cannot guarantee against torn sails. Damage to sails will be repaired at a reasonable charge.*

Prism Designs Inc.  
2222 N. Pacific  
Seattle, WA 98103  
(206) 547-1100  
(206) 547-1200 fax  
email: [prism@prismkites.com](mailto:prism@prismkites.com)  
[www.prismkites.com](http://www.prismkites.com)

### Inside:

Assembly

Safety

Flight Training

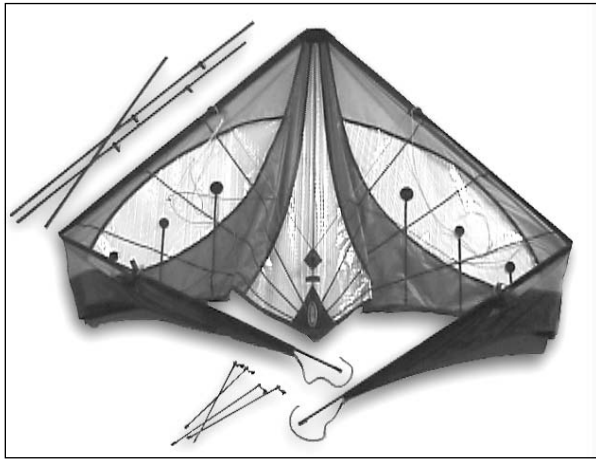
Tuning

High Winds

FIELD CARD

prism

# ASSEMBLY



1

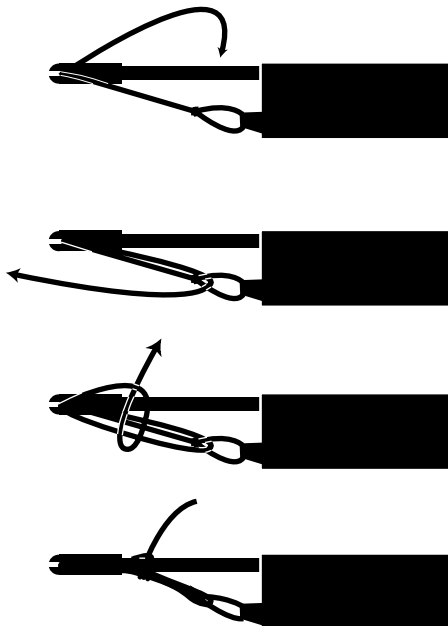
Unroll your kite and lay it out as shown. In addition to the sail, you should have:

- Two long lower spreaders, one male and one female
- One short upper spreader
- Two short outer standoffs
- Two long inner standoffs



2

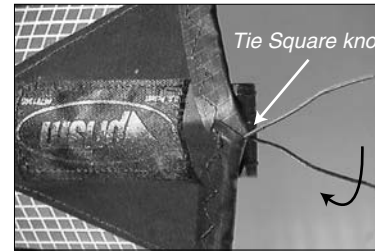
Connect the leading edge rods for each wing at the ferrules.



3

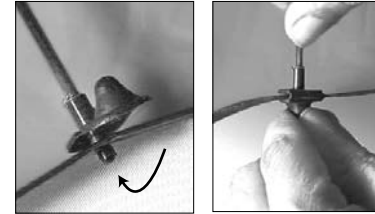
Tension your leading edges at the wingtips as shown. Make sure your tip tension is good and tight for best performance:

Tie off with two hitches around the leading edge spar



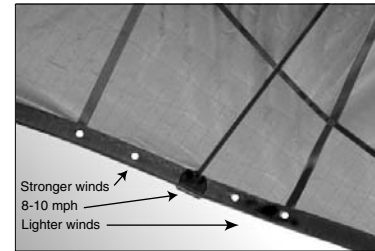
4

Pull about 1/2" inch of tension into each blue leech-line at the end of the spine and secure with a square knot. Re-tension as necessary if your kite buzzes at all during flight. Your kite should be silent in all wind conditions.



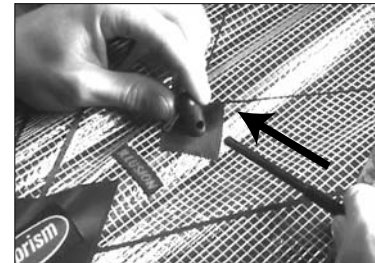
5

Clip the four thin standoff rods into the sail as shown below. Be sure each clip "clicks" closed.



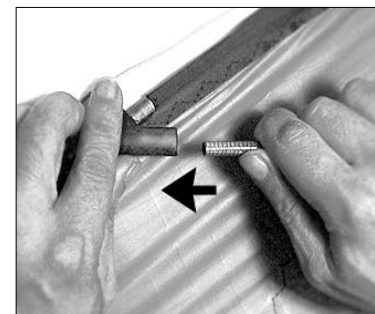
6

For moderate winds (8-10 mph) start with the adjustable inner standoffs on the middle holes. Move them farther in for more lift in lighter winds. Move them out for more precision and less pull in stronger winds. All standoffs be roughly perpendicular to the lower spreaders.



7

Insert the ends of the lower spreaders into the center T fitting.



8

Insert the upper and lower spreaders all the way into the leading edge fittings. Check that the bridles are clear of the fittings.

*NOTE:* The inner legs of the bridle will be taut as you insert the upper spreader. This is normal— they will loosen again once the spreader is fully inserted.

*CAUTION!* Hold the spreaders close to the end as shown so you don't slip and puncture the sail.