

Safety

Remember, flying safely is your responsibility.

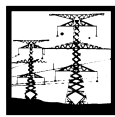
DO NOT FLY NEAR:



People



Airports



Power lines

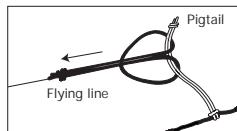


Cars

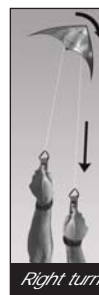


Storms

First Flight



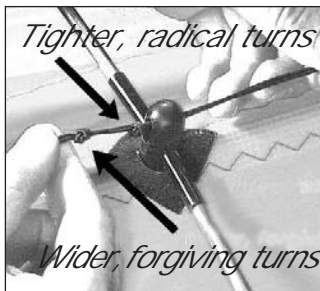
Attach your flying lines using a Lark's Head knot as shown.



Unwind your lines and check that the flying line in your right hand is connected to the right-hand bridle with the kite pointed up. If not, switch hands. Some people color code their line ends with a magic marker to make this check easy.

Clear your flying area. Make sure there are no people in your flying space. A sharp, sweeping pull on both lines will launch your kite. Keep your arms by your side and your hands low at all times for best control.

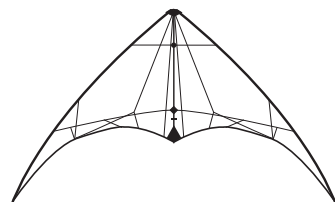
Tuning



Once you can keep the kite in the air comfortably in moderate winds, try switching your bridle to the radical setting for quicker turns and tighter spins. Find complete tuning information in the "Flight Training" section of your Prism CDROM or on the Prism website at www.prismkites.com

Specifications

Wingspan: 76"
Wind Range: 3-25 mph
Frame: .196" carbon,
.220 carbon
Weight: 8.8 oz.
Rec'd lines: 80# x 65'



© 2000 Prism Designs Inc. All rights reserved.

Fanatic

Congratulations! The Fanatic is one of the most popular sport kites we've ever produced. It offers an ideal introduction to the sport for the beginning pilot, but its adjustability and responsiveness make it a kite you'll never outgrow.

Once you've mastered the basics (it takes most people 1 to 3 hours to get the hang of it), the Fanatic will keep growing with you as you learn. Set the quick-adjust bridle to the radical setting and challenge yourself with quicker tricks and tighter spins. Adjustable standoffs let you explore the bottom end of the wind range and tune the kite for your flying style.

Read this field card carefully to be sure you assemble and adjust your new Fanatic correctly before flying. For loads of information on all aspects of sport kiting, from kite tuning to the latest tricks, check out the new Prism CDROM *Take Flight*, or stop by our website at www.prismkites.com.

Our Word

At Prism we guarantee everything we make. That means that if you're not happy, we're not happy. If you have a problem with your kite and your retailer is unable to help, please contact us by phone, fax, or e-mail and we'll do everything we can to make things right.

Smooth winds!

Prism Designs Inc.
2222 N. Pacific
Seattle, WA 98103
(206) 547-1100
(206) 547-1200 fax
email: prism@prismkites.com
www.prismkites.com

Inside:

Assembly

Safety

First Flight

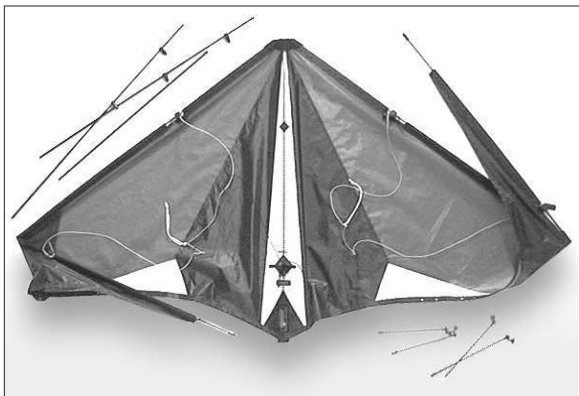
Tuning

Specifications

FIELD CARD

prism

ASSEMBLY



1

Unroll your sail and lay it out as shown. In addition to the sail, you should have:

- Two long lower spreaders
- One short upper spreader
- Two short standoffs
- Two long standoffs



2

Connect the leading edge rods for each wing at the ferrules.



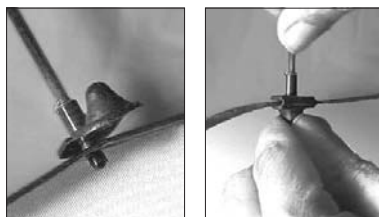
3

Using your upper spreader as a tool, tension the elastic at each wingtip as shown.



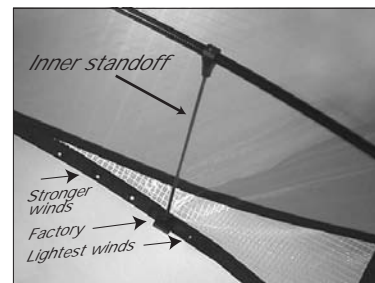
4

With your wingtips tensioned, check that the sail is smooth and wrinkle-free along the leading edge. The tighter your tip tension, the better.



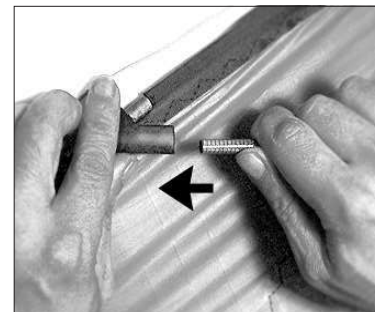
5

Clip the thin standoff rods into the holes in the back edge of the sail. Clip the short rods into the holes nearer the wingtips. Clip the long rods in as shown in Step 6.



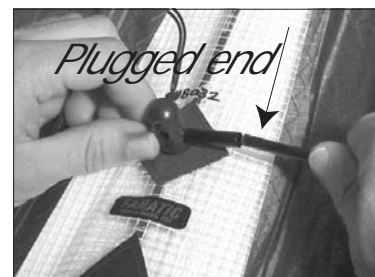
6

Start with the long inner standoffs at the factory setting. Later you can move them to other holes to see how they affect the lift and speed of the kite in different winds. See the Prism CDROM to learn more about standoff adjustment.



7

Insert the upper and lower spreaders all the way into the leading edge fittings. Check that the bridles are clear of the fittings, and hold the spreader rods close to the end as shown so you don't slip and puncture the sail.



8

Insert the PLUGGED ends of the lower spreaders into the center "T" fitting. Tension the sail by inserting the standoffs into the spreader fittings. Hang the kite from the bridles to check that they aren't tangled.

